



THE MARYLAND-NATIONAL CAPITAL PARK AND PLANNING COMMISSION

Department of Parks and Recreation, Prince George's County  
6600 Kenilworth Avenue Riverdale, Maryland 20737

December 18, 2024

INVITATION FOR BID

*Isabell, Billingsley II (Dyson), Hohensee*

*The Maryland-National Capital Park and Planning Commission hereby invite sealed proposals from interested and responsible parties for the lease of 3 separate agriculture properties:*

- *Isabell Farm Located at 17303 White's Landing Road, Brandywine, MD thirty three (33) acres of farmland*
- *Billingsley II (Dyson Road) located at 8848 Dyson Road, Brandywine, MD 20613 thirty five and a half (35.5) acres of farmland*
- *Hohensee located at 17230 Swanson Road, Upper Marlboro, MD thirty nine (39) acres of farmland*

*Properties are bid separately, not together.*

*Bidders must agree to follow a soil and water conservation plan and adhere to site restrictions, pesticide regulations and liability insurance requirements as set by The Maryland-National Capital Park and Planning Commission.*

*Sealed bids must be received by 4 pm on Thursday, January 30, 2025 to:*

*Natural and Historic Resources Office*

*6707 Green Landing Road*

*Upper Marlboro MD 20772*

*Attn. Michelle Adams*

*Sealed bids will be opened Friday, January 31, 2025 and winner of bids will be notified. The sealed bid should state the terms of the offer (\$ per acre/year) and agriculture experience.*

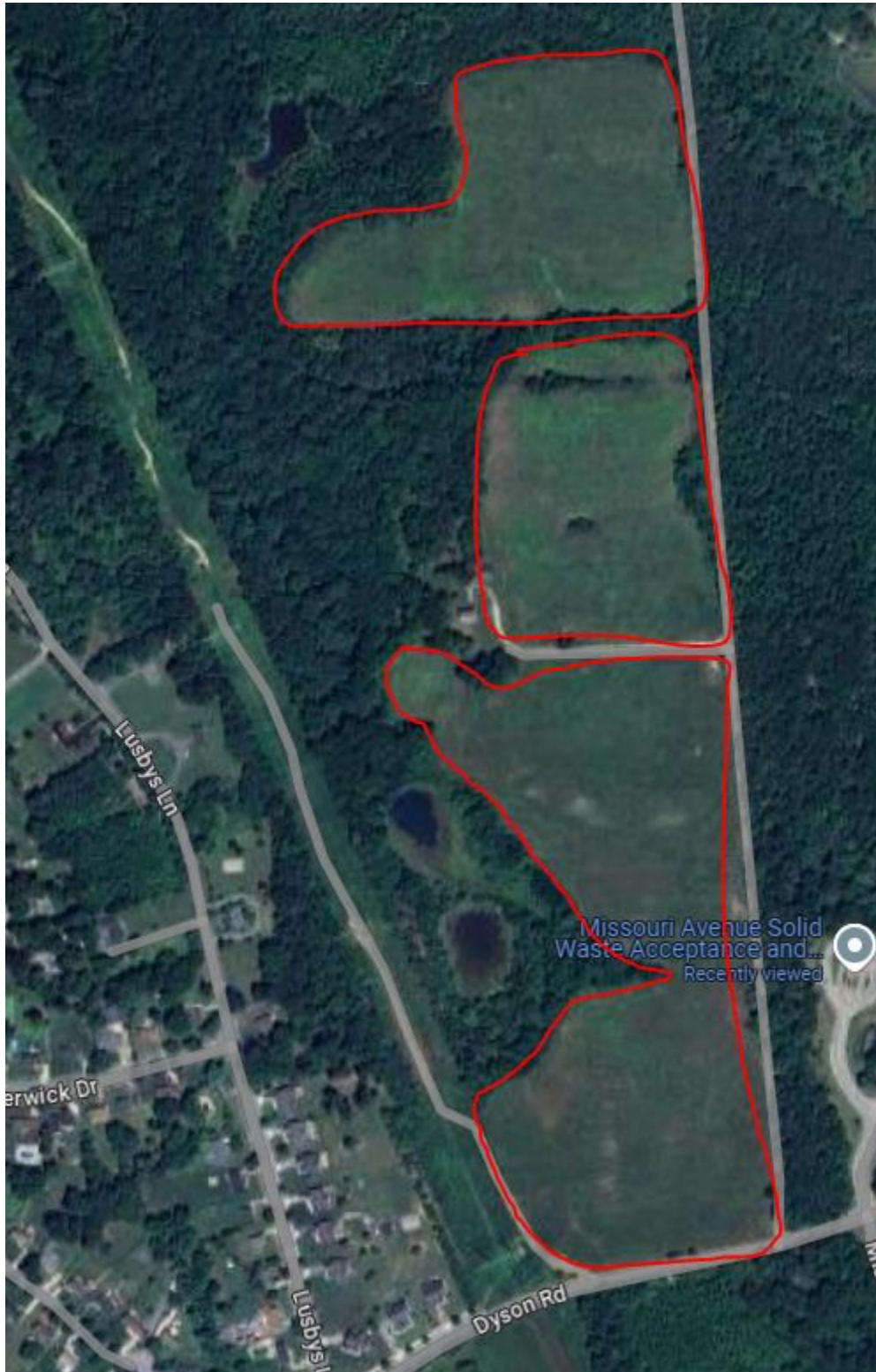
*The Commission reserves the right to reject any and all proposals received, and to waive irregularities.*

*Concerns and questions should be directed to the Natural and Historic Resources Office 301-627-2270.*

Isabell Farm (approximately 33 acres)



Billingsley II (Dyson Road): Approximately 35.5 acres





Hohensee (approximately 39 acres)

